

# SMMSi / SHRMi VRF Indoor Unit MMU-AP0181MH2UL - Compact 4-Way Cassette

# TOSHIBA Carrier

## Submittal Data

Job Data \_\_\_\_\_ Location \_\_\_\_\_  
 Buyer \_\_\_\_\_ Buyer PO # \_\_\_\_\_ Carrier # \_\_\_\_\_  
 Unit Number \_\_\_\_\_ Model Number \_\_\_\_\_  
 Performance Data Certified By \_\_\_\_\_ Date \_\_\_\_\_



### SMMSi / SHRMi VRF Compact 4-Way Cassette Features

- R-410A Refrigerant
- Five sizes from 7,500 to 18,000 Btu/h
- Standard condensate pump with 24.7 in. lift capability
- Quiet operation, as low as 31 dBA
- Independent louver control (fixed or swing)
- Optional wired or wireless controls
- Auto or manually set three fan speeds
- Easy to remove cleanable filter
- Five-year parts limited warranty

Indoor Unit Model	MMU-AP0181MH2UL	
<b>PERFORMANCE</b>		
Cooling Rated Capacity	Btu/h	18,000
Heating Rated Capacity	Btu/h	20,000
Fan Type (Qty)		Turbo (1)
Airflow ( L / M / H)	CFM	310 / 380 / 450
Sound Pressure (L / M / H)	dBA	36 / 41.5 / 46.5
<b>ELECTRICAL</b>		
Power Supply	V/Ph/Hz	208-230/1/60
Power Consumption (Input)	kW	0.052
Full Load Amps (FLA)	A	0.5
Minimum Circuit Amps	A	0.7
Maximum Overcurrent Protection	A	15
Motor Type	DC Inverter Driven	
Motor Watts		60

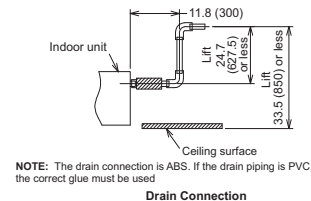
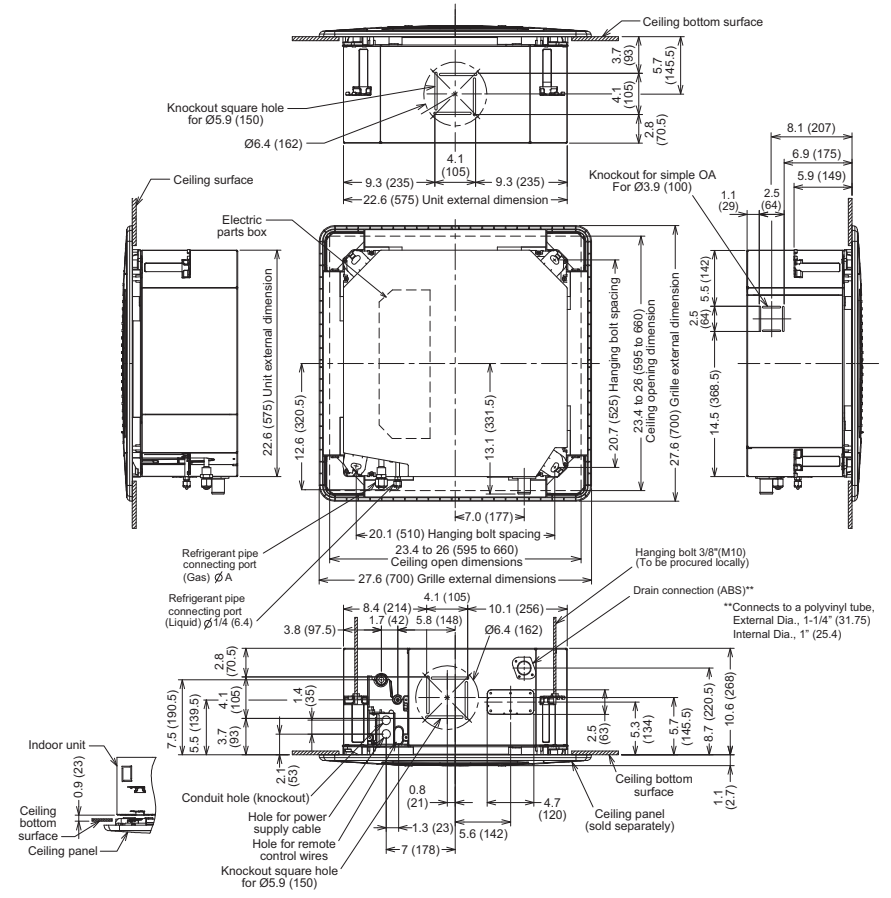
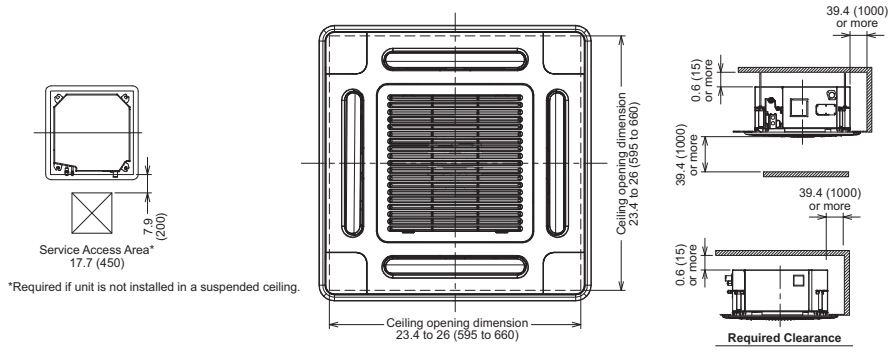
<b>PHYSICAL DATA</b>		
Pipe Connection Size - Liquid (High Pressure)	in.	1/4 (Flare)
Pipe Connection Size - Gas (Low Pressure)	in.	1/2 (Flare)
Pipe Connection Size - Drain (OD)	in.	1-1/4
Pipe Connection Size - Drain (ID)	in.	1
Refrigerant	R-410A	
External Finish	Munsell 2.5GY9.0/0.5	
Unit Width	in.	22-9/16
Unit Height	in.	10-9/16
Unit Depth	in.	22-9/16
Unit Net Weight	lb	35
Panel Width	in.	27-9/16
Panel Height	in.	1-1/8
Panel Depth	in.	27-9/16
Panel Net Weight	lb	7

### ACCESSORIES (Optional)

- Lite Vision Plus Remote Controller (7-Day Programmable) RBC-AMS51E-ES
- Simple Wired Remote Control RBC-AS41UL
- Stand-Alone Receiver with Wireless Remote TCB-AX32UL
- Remote Sensor TCB-TC41LUL
- Wired Remote Controller RBC-AMT32UL
- Grille Panel RBC-UM11PG(W)-UL

Manufacturer reserves the right to discontinue, or change at any time, specifications or designs without notice and without incurring obligations.

# DIMENSIONAL DRAWING INDOOR UNIT COMPACT 4-WAY CASSETTE MMU-AP0181MH2UL



**NOTE:** The drain connection is ABS. If the drain piping is PVC, the correct glue must be used.

**Refrigerant Connection Sizes**

Model Size	A
MMU-	A
AP018	Ø1/2" (12.7)

**NOTE:** All dimensions shown in inches (mm).

